

**OPTIONS**

ER-01PUG	Receipt/journal thermal printer
UP-I20DP	Integrated rear customer display
UP-P20DPB	Remote customer pole display
UP-E13MR2	Magnetic card reader
ER-03DW/04DW/05DW	Remote drawer
ER-48CC3	Coin case for ER-03DW
ER-48CC2	Coin case for ER-04DW
ER-58CC	Coin case for ER-05DW

For further details about additional options not listed above, contact your Sharp dealer  
Note: You cannot use the UP-I20DP and the UP-P20DPB simultaneously.

**OTHER FEATURES**

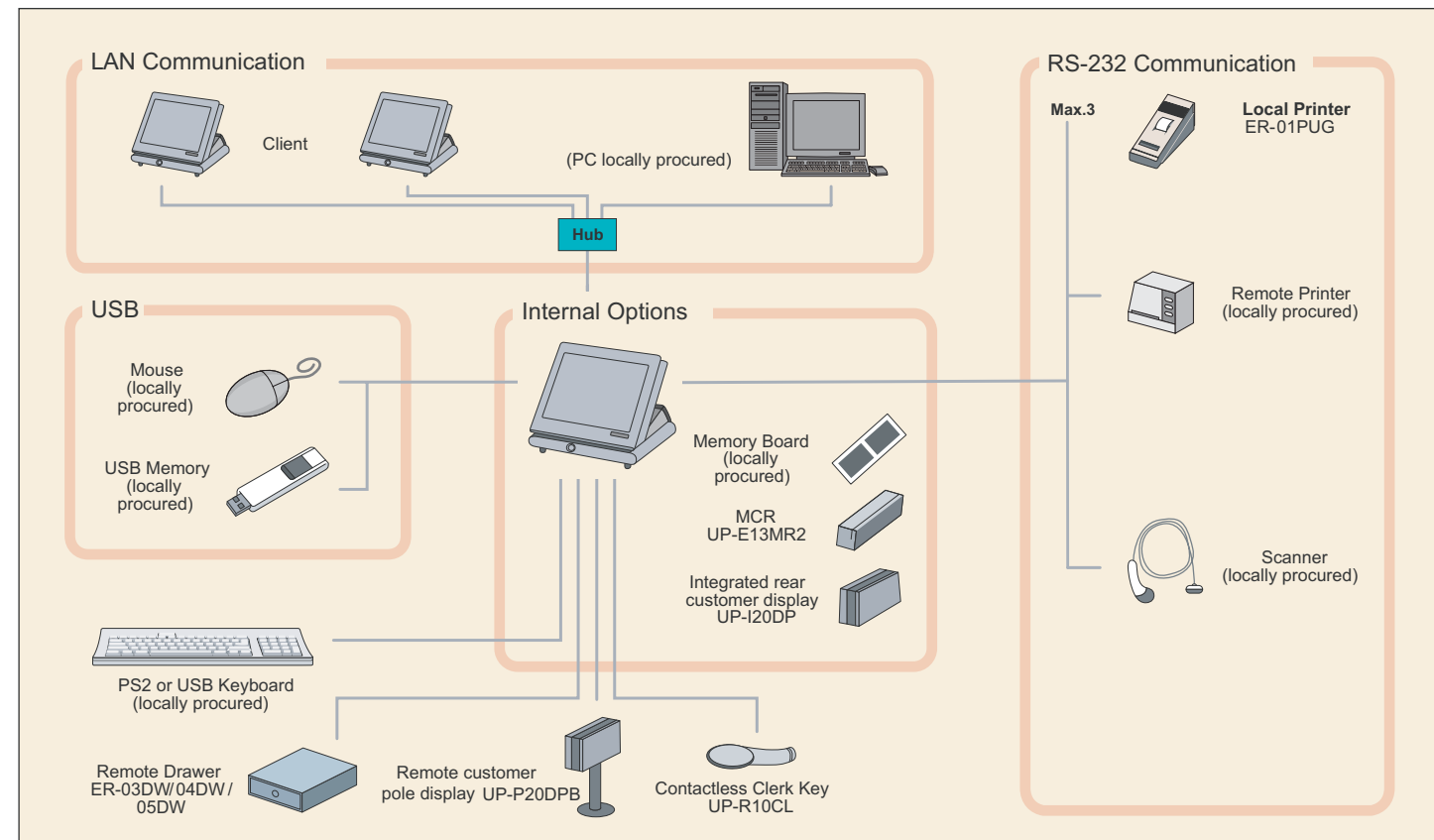
- Simple, low-stock tracking function
- Multi-language kitchen printing
- Sorted receipt function with sort shift function
- Enhanced receipt shift function
- Barcode can be printed on bills

Dimensions and weight are approximate.  
Design and specifications are subject to change without prior notice.  
Windows is a registered trademark or trademark of Microsoft Corporation in the United States and/or other countries. All other brand names and product names may be trademarks or registered trademarks of their respective owners.

**SPECIFICATIONS**

Operator Display	12.1-inch TFT colour LCD (XGA) with backlight
Customer Display (option)	Internal type or pole type 2 lines x 20 characters
Keyboard	Analogue touch screen
Resolution	1,024 x 768 dots
Drawer Ports	2 ports
CompactFlash Memory	128MB
Main Memory	128MB standard
Ethernet LAN	TCP/IP 10Base-T/100Base-TX
I/O Port	RS-232 x 3
External Bus	USB 2.0 x 2
Departments	Max. 99
PLUs	Max. 5000
Employee Control	Yes
Power Source	240 volts AC, 50Hz
Power Consumption	43 Watts (operating)
Dimensions (W x D x H)	307 x 311 x 284 mm
Weight	5.5 kg

**CONFIGURATION**



Bring Together  
Superior Style and  
Exceptional Performance

**SHARP**

SHARP CORPORATION OF AUSTRALIA PTY LTD  
ABN 40 003 039 403  
WWW.SHARP.NET.AU

Distributed by:

Sharp introduces the point of sale (POS) terminal, model UP-X300, for restaurants, pubs, bars, and cafeterias. The powerful built-in software provides full reliability, extendibility, and flexibility to fit the most demanding hospitality markets.

The UP-X300 offers all the functionality necessary to run a restaurant, all in a package that boasts a bright, easy-to-use LCD with GUI touch panel.

The UP-X300 is a truly amazing system.

## HARDWARE

**POWERFUL HARDWARE FOR A WHOLE NEW LEVEL OF SPEED AND VERSATILITY**

### Brilliant 12.1-Inch Backlit TFT Colour LCD

The 16-bit XGA-resolution (1,024 x 768) LCD provides high-end graphics with exceptional clarity and wide viewing angles. The analogue touch panel is equipped with customised control settings to meet your needs.

### CompactFlash Memory

The UP-X300 comes standard with a CompactFlash disk.

### Contactless Clerk Key Option

Without the need for an electrical connection or insertion into the POS, the Contactless Clerk Key minimises wear on the POS. ID codes for individual clerks are encrypted for security.

### Increased System Extendibility

Making the most of your POS system, two standard USB ports, three standard RS-232 ports, and Ethernet LAN port give you the flexibility and range to build a customised configuration.

### Stylish and Durable Design

The sleek, modern, and low-profile cabinet design fits easily into small spaces and blends smoothly into any hospitality environment. The durable, spill-resistant surface safeguards against spills and wet hands.

### Optional Accessories

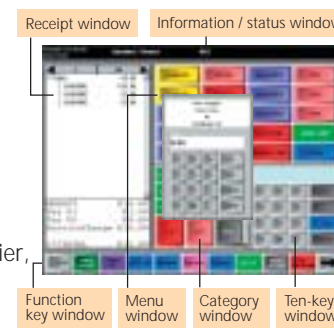
Customer displays, cash drawers, printers, a scanner, and an integrated 3-track MCR (magnetic card reader) are all available options to enhance your POS system.

## SOFTWARE

**POWERFUL ESSENTIAL SOFTWARE FOR THE ULTIMATE IN CONVENIENCE AND EFFICIENCY**

### Graphical User Interface (GUI) Touch Panel

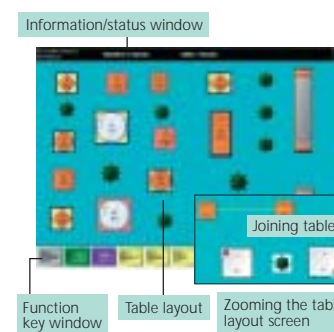
The UP-X300 is equipped with a colour LCD touch panel. Operation can be performed by touching the screen that appears in the window of the display. The screen layout for registration and keys can be edited by your supplier, providing easy operation and flexible screen design.



### Graphical Table Layout

The UP-X300 has a number of useful functions. You can design a restaurant **table arrangement** layout in the screen. The UP-X300 shows each table with an assigned number and displays information such as the number of seats, check number, guest counter. It is also possible to join tables, reserve tables, or prohibit the use of tables. The UP-X300 can also **display the stage of service for tables**. For example, the service stage of no orders, starters, main meals, desserts, payment, or cleaning can be viewed by different table colours. You can easily identify free tables or the current service stage of each table. In the graphical table layout screen, the convenient **Table Alert function** can initiate the flashing of tables that have not been served within a defined time interval.

The **Automatic Table Search function** finds tables for your guests or puts them on a waiting list until a table is available. As soon as a suitable table is free, a message is automatically



displayed and guides you to open the table for the waiting guests. The graphical table layout also allows you to manage your service efficiently. You can define service sections and assign servers to each section.

### Bill Separation

This function allows you to separate a group of orders into individual bills, simply by dragging and dropping the items. It also allows you to automatically split bills by entering the number of persons or the payment amount.



### Combo Meal Function

The Combo Meal function lets you combine two or more menu items into a single stroke entry. For the associated PLUs, 3 types of prices (ordinary price, mark-up price, and discount price) can be programmed. The mark-up price is used for large-portion requests, and the discount price is used for small portions such as a child's meal.

### Condiment Entries

The UP-X300 lets restaurants cater to the specific desires of guests. For example, entering a menu-item PLU brings up a message such as "How cooked?" and offers the key entry of RARE, MED.RARE, and WELLDONE. The UP-X300's condiment table items can be entered for each menu item in one set or by multiplication entry. So it's no problem if your guest wants to decide on the set menu's dessert after eating the main meal. The Later Dessert function allows you to order a non-specific dessert for a table and enter the real dessert order later.

### Promotion Functions

Various pre-programmed menu specials are provided to support your promotion activities. Each promotion can be

activated for a time interval, on valid weekdays, during a valid month, and for a defined period.

- 1 Automatic Modifier is used in pubs and restaurants for quick and easy registration. Modifier items from a promotion table are automatically registered instead of the original item. You can also operate it manually via a modifier key.
- 2 Convenient Mix-and-Match functions are available for selling bundled articles under special conditions such as a special price, with a discount, or with an item free of charge.
- 3 Happy Hour Price allows you to register up to 20 different event prices.

### Repeat Round Entries

When the [REPEAT ROUND] key is touched, the PLUs are reordered based on the last order. Those PLUs which have been programmed as "repeat round: yes" can be repeated by touching the [REPEAT ROUND] key once.

### Mail Function

Messages can be sent from the server to each clerk's machine. The received message can be displayed on the UP-X300 screen and is also printable.



### Employee / Server Function

The UP-X300 allows you to define the authorisation level of employees/servers. For each staff member, individual functions can be blocked, password protected, or compel a reason code entry. By tracking the check in/out and break times of your employees and providing Manager Edit, the UP-X300 establishes a sound base for workforce management. In a multiple terminal environment, the Overlapped Clerk function and Remote Sign Off feature allow you to easily serve your customer at any terminal.